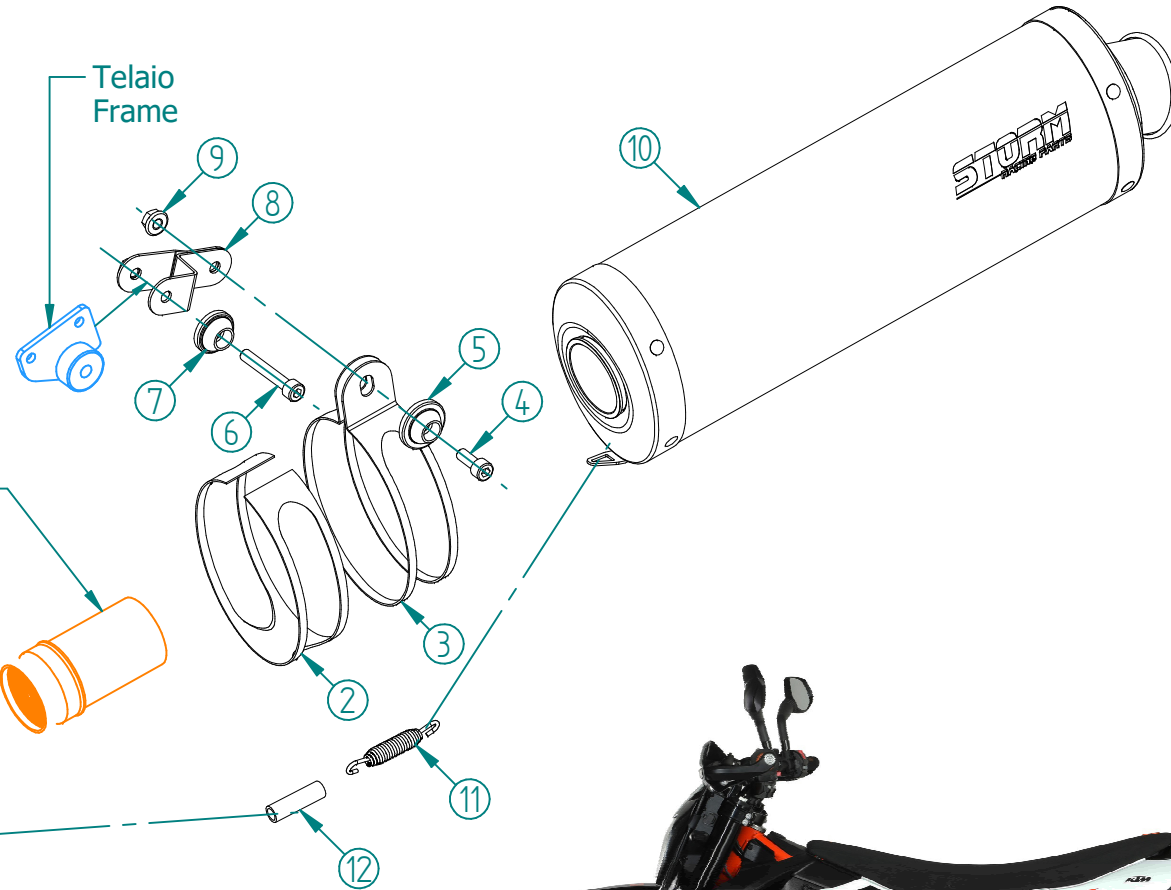


#	DESCRIPTION	PART NUMBER	QTY
1	Tubo di raccordo / Link pipe	9773KT023SE	1
2	Protezione in gomma / Rubber protection	50.73.041.1	1
3	Staffa / Bracket	50.SS.002.0	1
4	Vite M8x20 / Screw M8x20	50.73.894.1	1
5	Rondella in alluminio / Aluminium washer	50.73.063.1	1
6	Vite M8x50 / Screw M8x50	50.73.074.1	1
7	Rondella in alluminio / Aluminium washer	50.73.291.1	1
8	Staffa / Bracket	50.SS.1253.0	1
9	Dado M8 flangiato / Flanged nut M8	50.73.393.1	1
10	Silenziatore / Muffler - db killer 50.DK.092.0	OVAL 400	1
11	Molla media / Mid-size spring	50.73.359.1	1
12	Tubo in gomma / Rubber pipe	50.73.049.0	1

Catalytic Converter
Cod. ACC.041.A1
Optional for 74.KT.023.LX2 -74.KT.023.LX2B
Included in 74.KT.023.KX2 -74.KT.023.KX2B

Parti originali
Original parts



APPLICAZIONI / APPLICATIONS				
CODICE / CODE	SILENZIATORE / MUFFLER	NOTE	TUBO / PIPE	FASCETTA / CLAMP
74.KT.023.LX2	INOX / ST. STEEL	CATALYTIC CONVERTER	INOX / ST. STEEL	INOX / ST. STEEL
74.KT.023.LX2B	STEEL BLACK	NOT INCLUDED		
74.KT.023.KX2	INOX / ST. STEEL	CATALYTIC CONVERTER		
74.KT.023.KX2B	STEEL BLACK	INCLUDED		