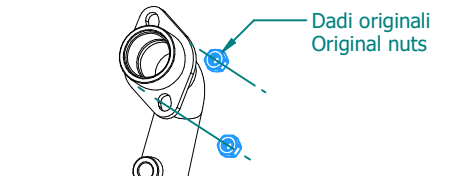
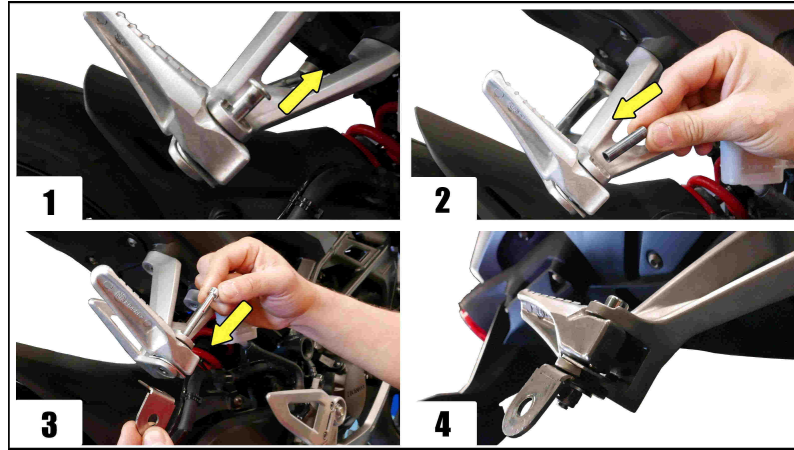
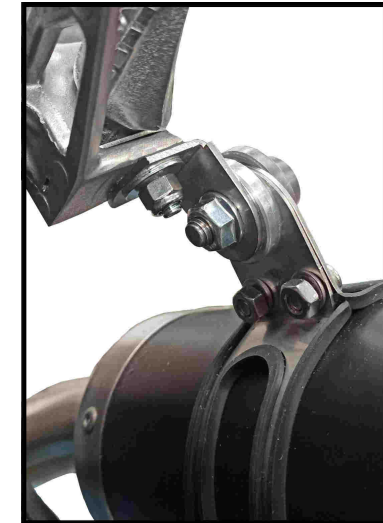
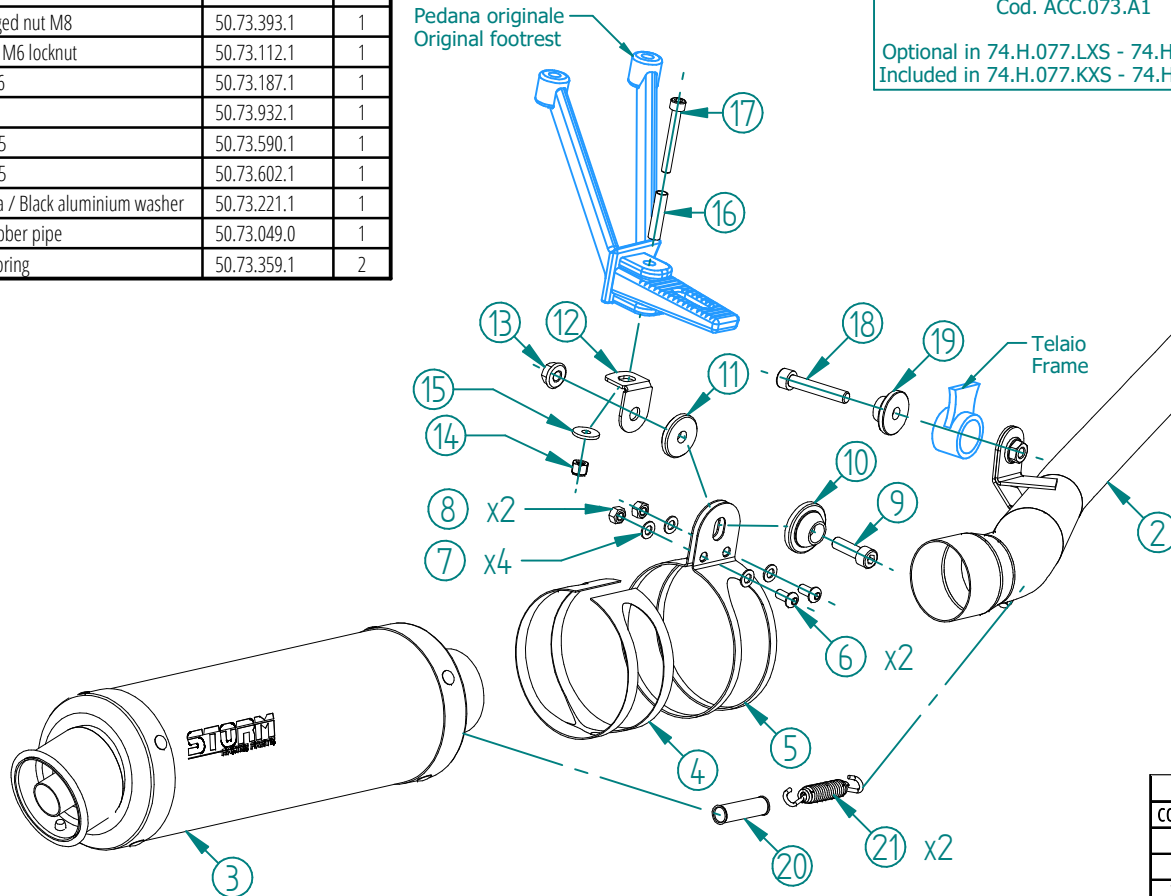


#	DESCRIPTION	PART NUMBER	QTY
1	Tubo collettore / Down pipe	9773H077S2A	1
2	Tubo di raccordo / Link pipe	9773H077S2B	1
3	Silenziatore / Muffler - db killer 50.DK.021.0	GP	1
4	Protezione in gomma / Rubber protection	50.73.077.1	1
5	Staffa / Bracket	50.SS.241.1	1
6	Vite M6 x 12 / Screw M6 x 12	50.72.024.1	2
7	Rondella M6 / Washer M6	50.72.027.1	4
8	Dado M6 / Nut M6	50.73.146.1	2
9	Vite M8x25 / Screw M8x25	50.73.064.1	1
10	Rondella in alluminio / Aluminium washer	50.73.063.1	1
11	Distanziale in alluminio / Aluminium spacer	50.73.124.1	1
12	Staffa / Bracket	50.SS.1606.0	1
13	Dado M8 flangiato / Flanged nut M8	50.73.393.1	1
14	Dado M6 autobloccante / M6 locknut	50.73.112.1	1
15	Rondella M6 / Washer M6	50.73.187.1	1
16	Bussola / Bush	50.73.932.1	1
17	Vite M6x45 / Screw M6x45	50.73.590.1	1
18	Vite M8x45 / Screw M8x45	50.73.602.1	1
19	Rondella in alluminio nera / Black aluminium washer	50.73.221.1	1
20	Gommino per molla / Rubber pipe	50.73.049.0	1
21	Molla media / Mid-size spring	50.73.359.1	2



Pedana originale
Original footrest

Mandatory Catalytic Converter
Cod. ACC.073.A1
Optional in 74.H.077.LXS - 74.H.077.LXSB
Included in 74.H.077.KXS - 74.H.077.KXSB



APPLICAZIONI / APPLICATIONS				
CODICE / CODE	SILENZIATORE / MUFFLER	TUBO / PIPE	FASCETTA /	NOTE
74.H.077.LXS	INOX / ST. STEEL	INOX / ST. STEEL	INOX / ST. STEEL	CATALYTIC CONVERTER NOT INCLUDED
74.H.077.KXS				CATALYTIC CONVERTER INCLUDED
74.H.077.LXSB	STEEL BLACK	INOX / ST. STEEL	INOX / ST. STEEL	CATALYTIC CONVERTER NOT INCLUDED
74.H.077.KXSB				CATALYTIC CONVERTER INCLUDED