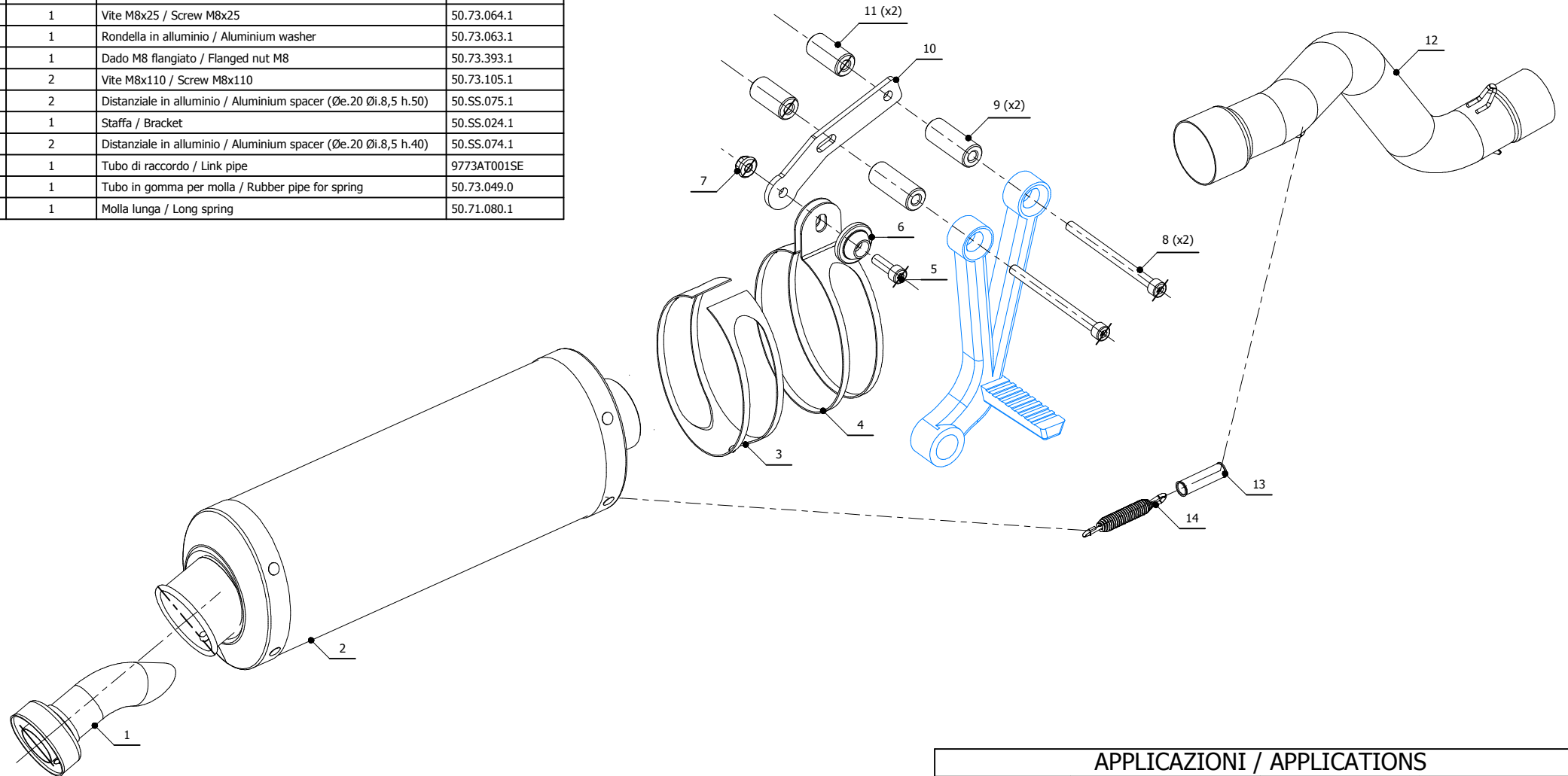


**ELENCO PARTI / PARTS LIST**

#	QTÀ / QTY	DESCRIZIONE / DESCRIPTION	CODICE / CODE
1	1	DB killer / DB killer	50.DK.020.0
2	1	Silenziatore / Muffler	OVAL 360
3	1	Protezione in gomma per staffa / Rubber protection for bracket	50.73.041.1
4	1	Staffa / Bracket	50.SS.002.0
5	1	Vite M8x25 / Screw M8x25	50.73.064.1
6	1	Rondella in alluminio / Aluminium washer	50.73.063.1
7	1	Dado M8 flangiato / Flanged nut M8	50.73.393.1
8	2	Vite M8x110 / Screw M8x110	50.73.105.1
9	2	Distanziale in alluminio / Aluminium spacer (Øe.20 Øi.8,5 h.50)	50.SS.075.1
10	1	Staffa / Bracket	50.SS.024.1
11	2	Distanziale in alluminio / Aluminium spacer (Øe.20 Øi.8,5 h.40)	50.SS.074.1
12	1	Tubo di raccordo / Link pipe	9773AT001SE
13	1	Tubo in gomma per molla / Rubber pipe for spring	50.73.049.0
14	1	Molla lunga / Long spring	50.71.080.1


**APPLICAZIONI / APPLICATIONS**

CODICE / CODE	SILENZIATORE / MUFFLER	TUBO / PIPE	FASCETTA / CLAMP
74.AT.001.LX2	INOX / ST. STEEL	INOX / ST. STEEL	INOX / ST. STEEL
74.AT.001.LX2B	STEEL BLACK		