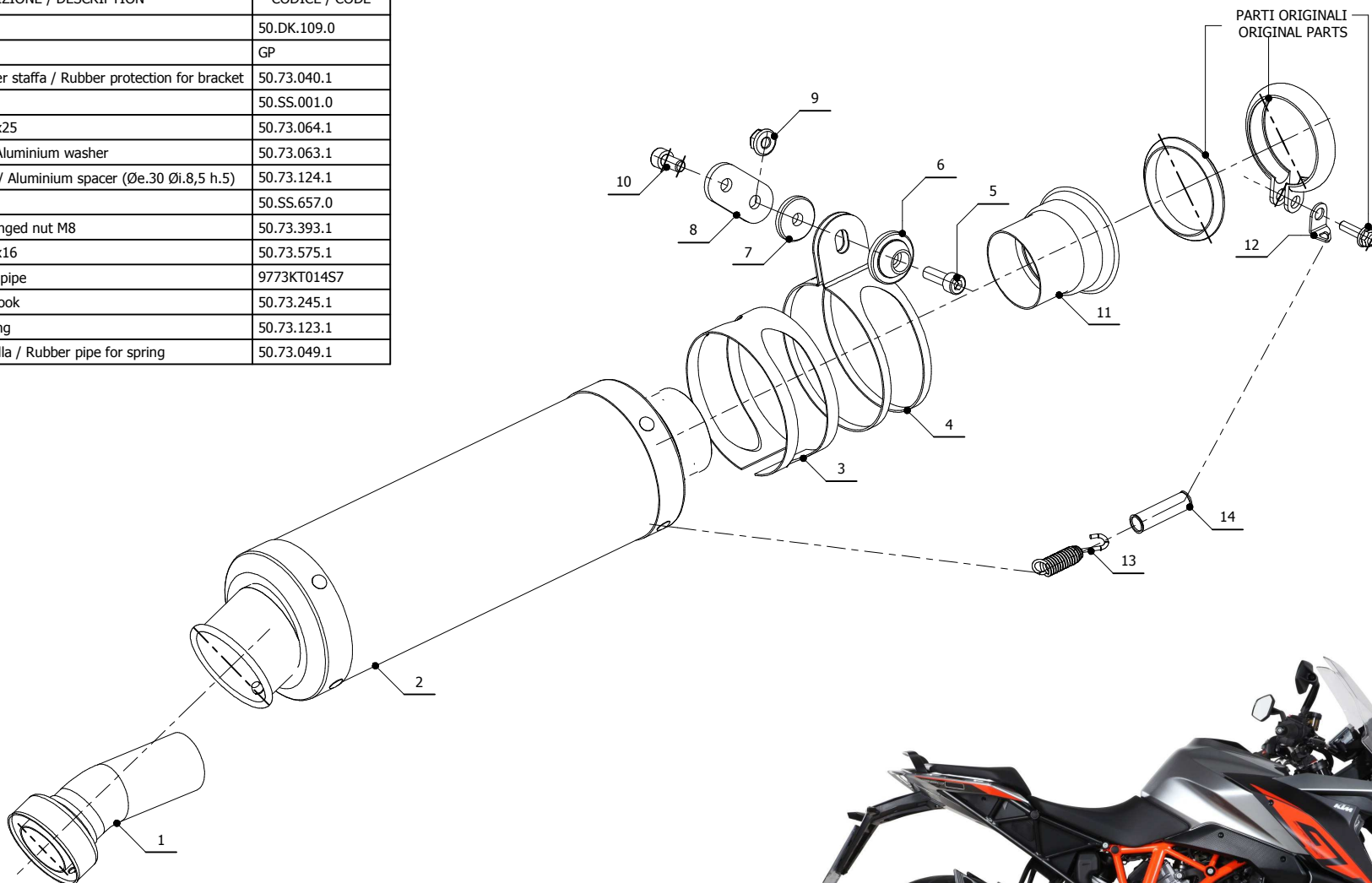


ELENCO PARTI / PARTS LIST

#	QTÀ / QTY	DESCRIZIONE / DESCRIPTION	CODICE / CODE
1	1	DB killer / DB killer	50.DK.109.0
2	1	Silenziatore / Muffler	GP
3	1	Protezione in gomma per staffa / Rubber protection for bracket	50.73.040.1
4	1	Staffa / Bracket	50.SS.001.0
5	1	Vite M8x25 / Screw M8x25	50.73.064.1
6	1	Rondella in alluminio / Aluminium washer	50.73.063.1
7	1	Distanziale in alluminio / Aluminium spacer (Øe.30 Øi.8,5 h.5)	50.73.124.1
8	1	Staffa / Bracket	50.SS.657.0
9	1	Dado M8 flangiato / Flanged nut M8	50.73.393.1
10	1	Vite M8x16 / Screw M8x16	50.73.575.1
11	1	Tubo di raccordo / Link pipe	9773KT014S7
12	1	Gancio molla / Spring hook	50.73.245.1
13	1	Molla corta / Short Spring	50.73.123.1
14	1	Tubo in gomma per molla / Rubber pipe for spring	50.73.049.1



APPLICAZIONI / APPLICATIONS

CODICE / CODE	TUBO / PIPE	SILENZIATORE / MUFFLER	FASCETTA / CLAMP
74.KT.018.LXS	INOX / ST. STEEL	INOX / ST. STEEL	INOX / ST. STEEL

